

# Cranfield Express



February  
2005  
No 59

## PCFIXER

**Bugged by a bug? - Computer broke?  
Foxed by email? - Internet slow?**

Computer repairs - Hardware or Software Security - Networks - Internet  
Computer and software training ... In your home or office

Fixed rates - no call-out charge

Tel...01525 402995 - 07989 417750

## So, Whose Sewer is it?

Who owns the pipe to the sewer that runs down the middle of the road and serves your property? You pay your council tax and water rate and sewerage charges, so is it Mid Beds District Council or Anglian Water?

You can imagine the astonishment of the residents of Orchard Way when in October 2004 we were informed that we owned the sewer pipe. For the first time in almost forty years we were made aware of this situation.

How can this have happened? The maintenance of the pipe has always been undertaken by the authorities and so why only now have we been told it was a private sewer? The cynical may say it was brought about because there was a blockage in the pipe and it was going to be costly to remedy. Mid Beds informed us that if we did not engage our own contractor they would carry out the necessary repair and then invoice us, the residents for the work plus a 20% administration fee.

The whole question of the ownership of the pipe is being queried with Mid Beds District Council and Anglian Water. We have not as yet seen the documentation held by Mid Beds although they have referred to a letter in October 1969, but there is sufficient for their purposes to conclude that they did not adopt the sewer pipe. But if it is a private sewer why have the authorities been maintaining it since the houses were built in the mid 1960's until October 2004?

We have carried out our own research. The paperwork for solicitor searches carried out in January/October 1969 on two of the properties shows that the then Clerk to Ampthill Rural District Council confirmed they were within 100 feet of a public sewer. The authorities contend that the maps they have been

using are correct and if this is the case then the nearest public sewer to Orchard Way runs down the middle of Cranfield High Street. For both of these properties this is more than 100 feet. Then consider the maintenance that has to date always been carried out over the years by the authorities and which many residents can recall. Obviously we kept no records as we did not consider them to be necessary.

The official response to both of these circumstances is that they were errors. We should approach the solicitors who carried out the searches and seek reimbursement of the fees charged plus any previous maintenance undertaken. This was done purely on a without prejudice basis and neither of these affects the decision now made to regard the sewer as being in the ownership of the residents.

Our querying of the ownership continues and a meeting is to be held between Mid Beds District Council/Anglian Water and the residents. Despite our request that bills should be deferred until the question of ownership has been resolved, and especially before the meeting has taken place, the Council intend to proceed with their issue by the end of January. Once sent the bills must be paid and we have also been told that we have no right of appeal against them.

The Cranfield Express has confirmed they would like to attend the meeting the outcome of which will be reported in a later edition.

But is this an isolated incident. Regretfully it does not appear to be the case and from information in our possession there are other residents in Cranfield who could find themselves in a similar position. From a map showing only a part of Cranfield

High Street, do the residents know that there could be private sewers serving Red Lion Close, Walk House Close, Oak Barn Close, Maltings Close and Simdims? There could well be many more houses with unadopted sewers according to Anglian Water for which we do not have any details.

So please be warned if you have problems with your sewers you residents could be asked like us to meet the repair/maintenance costs.

If you would like any further information please telephone 751038 or 750671.

Orchard Way Residents

## Help!

We are still hoping for a volunteer to cover the 19 houses in Graces Close. Meantime the Cranfield Express for the afore mentioned close can be collected from Enoch's papershop. If anyone would like to help please call any of the contact numbers.

## Charity Bike Ride

As you will be aware it is tradition for The Swan to organise the yearly Charity Bike Ride and we are pleased to announce that the new proprietors, David and Louise, are more than happy to carry on with this. They hope to make a great success of it and, hopefully, will be able to raise a worthwhile sum for the young people of the area.

At time of going to press we are led to believe the event will take place on the last Sunday in May so, watch out for informative flyers and 'What's On' announcements in the *Cranfield Express*.

Keeping the village in touch

## Cranfield Express

Tel/Fax: 01525 280262  
07739872956

and 01234 750716

contributions@cranfieldexpress.co.uk  
adverts@cranfieldexpress.co.uk  
letters@cranfieldexpress.co.uk

Leave material in 'the boxes'  
at The Uni Costcutter,  
Enochs Paper Shop and  
Cranfield Newsagents

Deadline for next issue  
Tuesday 15th February  
[www.cranfieldexpress.co.uk](http://www.cranfieldexpress.co.uk)

*The views expressed in this publication are not necessarily those of the publishers. © 2004 Cranfield Express. No part of this publication may be copied in any form or by any means without the prior written permission of the publishers.*

*As an independent media platform, Cranfield Express aims to satisfy its duty to inform, explain, entertain and act as a community link in publishing the views of its readers.*

Don't forget you can look at all the main stories that have appeared in the Cranfield Express over the last five years, plus much more, on our Web Site.  
[www.cranfieldexpress.co.uk](http://www.cranfieldexpress.co.uk)

## LOOKS N LOCKS

### Unisex Hair & Beauty Salon

140 High Street, Cranfield, MK43 0EL

Nestling in the heart of the village of Cranfield is one of the most popular salons in the area who offer hair styling expertise, **beauty care & nail bar** combined with a friendly approach and flexible opening hours.

**For that complete hair and beauty experience :**

Tel: 01234 75 75 15

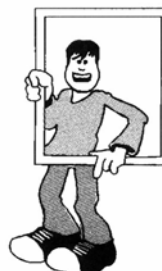
(parking at rear of premises - late nights Thurs.& Fri.)

## Master Windows

### Installation And Repairs

Windows, Doors, Fascias, Gutters

Quality products fitted by  
Quality installers



Tel: 01525 753828 Mob: 07774 655768

# Letters to the Editor

## From the Resi's Camp

Parish Council - please stop dithering and let us know what is going on!

The Parish Council needs to wake up to the fact that large scale housing development is coming to the village. I understand the debate around Home Farm versus the airfield site and the anti-development stance (I am personally anti-development and also in favor of the airfield site and hope their legal challenge amounts to something) but the fact of the matter is that a development brief in favor of the Home Farm site will be presented to the village in the next couple of months. The PC needs to have a strategy and a response to this.

On this basis I would like the PC to answer the following:

(i) what dialogue have they had to date with MBDC in terms of how the HF brief will look and in particular prioritising the issues raised by the community findings day held in August 2004 on behalf of the village, in particular issues concerning the impact of additional traffic in the village and the improvements required to basic infrastructure, amenities and facilities

(ii) what planning 'gain' (outside what the developers should reasonably be required to provide to ensure that the HF development's impact on the village is 'self-contained' and workable) they have discussed or are negotiating for the benefit of the village to be paid for by the developers ie new village hall, improved recreational facilities etc

(iii) what possible solutions are being considered and discussed with MBDC in terms of relocating the existing recreational area in the village as this provides the only workable solution for the expansion of the lower school; a split playing field site is likely to be put forward in the development brief given the recreational area is currently off limits. A solution to the proposed split playing field site for the lower school is in the hands of the PC. In my opinion, the PC are also likely to lose out on the opportunity to provide the village with a far improved recreational area with changing facilities and adequate security which would be a significant improvement on the vandalised and poor conditioned area we currently have

(iv) if they can't answer the above then what the hell have they been

discussing over the last six months

The PC cannot continue to ignore these issues and need to let the village know exactly what improvements and benefits they are looking at gaining from the proposed HF development and what has been discussed and agreed with MBDC and the developers to date. If this development goes ahead and with no infrastructure improvements or planning gain for the village then the PC have only one option left to consider... they must all resign.

Keith Buck

## Airfield Noise

With regard to the proposal to site a housing development on the edge of the airfield may I raise a few points with respect to airfield changes over the years.

1. During the fifties the types of research aircraft using the airfield were very noisy pure jets including a Canberra twin-engined bomber, a Hunter fighter, the twin-engined Paris, and other single-engined jets. There was also a prodigiously noisy Lancaster bomber (now of the RAF Memorial Flight). Trends in aircraft propulsion since the advent of the jet engine have been towards high bypass ratio, and more recently, turbofan engines. One of the primary reasons for their increasing use is because they are more fuel efficient than pure jets. Importantly, a feature intrinsically linked to the efficiency gains is also much reduced noise. This trend towards increased efficiency and lower noise levels will doubtless continue over the coming years, and this obviously has favourable implications for any airfield housing development.

2. Unlike Stansted and Luton airports, which are currently seeking expansion, Cranfield has not followed this trend. In fact, a few years ago, a large part of the main runway was dug up to make way for Nissan, and a consequence of this is that the airfield is now less able to accommodate large aircraft.

These two aspects would tend to assist the airfield housing development proposal.

David Binks

## The Inspectors Report

Dear Sir

1. The Inspectors Report on development in Cranfield favoured the use of the Airfield site.

2. At a village meeting in 2003,

the Airfield site was the preferred site for development.

3. Following the Community Planning Day on 4th August 2004, the Findings Report indicated that the feeling among villagers was that, should there be significant development in Cranfield, the Airfield site would be the preferred site.

4. At the village meeting on 11th November 2004, which was well attended, it was clear that the feeling in the room was that the Airfield was the preferred site for development.

The village has made its feelings known. All we need now is for our representatives on Mid Beds District Council, Councillors Alan Bastable and Ken Matthews to back the village and do a U turn. After all, the villagers put you in office to represent them, so do the right thing and support the village before it is too late.

4 Cranfield  
R Phillips

## From the Uni Camp

Dear Sir

In his letter to the January Cranfield Express concerning the choice of a housing allocation between the Home Farm and university airfield sites, Alan Bastable states: "Bear in mind, the proponents of both sites are commercially driven organisations - this is not about concerns for Cranfield - it is about money."

This statement raises the crucial issue of the status of the university, the major local employer.

The university is a charity. Consequently, any money raised from housing, or any other initiative, has legally to be used for its charitable educational objectives. In practice, therefore, any university land sale proceeds would benefit the local Cranfield community and economic development in the District in general. This fact is already well understood by the Parish Council and many residents in the Village, but is worthy of restatement.

Alan Bastable's statement "it is about money" raises the stark choice between: in the case of the university, the money being used with significant direct benefit to local economic development; and, in the case of Home Farm, the money being put in an individual's pocket or shareholders pockets.

Although both Councillors Bastable and Matthews would like to move on, the choice of site for housing development is of such importance that it is crucial that their advice is firmly rejected. All evidence throughout the long Plan Review process suggests that the majority view should and can ultimately prevail.

David R Newens  
Campus Development Officer

## From the MBDC Camp

Dear Councillor Bates

Thank you for your letter dated 23 November 2004, detailing the issues discussed at your recent village meeting held on 11 November 2004.

I was particularly sorry not to have

been able to be present on the evening, knowing the strength of opinion locally, and wishing to judge for myself to debate and equality of opportunity given for clarification and understanding to all parties. I must, however, depend on third party reports of the meeting.

I do not find it surprising that a meeting called to consider the rationale behind Mid Beds District Council's (MBDC's) preferred location for major housing development in Cranfield is well attended.

The historical position has been one of unanimity between MBDC and Cranfield Parish Council, with your District Councillors firmly opposed to further large scale housing developments in the Parish.

However with the passage of time, and recognition of the "selected settlement" status of Cranfield, together with the imbalance of a concentration of development in the Eastern side of the District, some expansion of Cranfield became inevitable.

Both Councillors Matthews and Bastable have had to reluctantly accept this position and whilst Councillor Bastable plays no part, due to his declared interest, Councillor Matthews is doing everything in his power to attempt to address not only the present infrastructure deficit, but also seeking to ensure the provision of the appropriate level of facilities to service the proposed increased population.

I can understand the residents' objection to expansion of the village, but I believe the Parish Council, with its greater level of involvement and understanding of such matters, also recognises the inevitability of more housing, albeit reluctantly.

Following publication of MBDC's initial findings on the Inspector's report of the Reviewed Local Plan the Executive concluded that further consideration should be given to the preferred single site location to accommodate a large scale housing development in Cranfield.

Following extensive discussions, advice and visits, the Executive concluded that had it not been for the sequential argument tipping the balance, the Home Farm site offered a better "quality of life" location for new housing, removed from the disturbance of the airfield.

We are all aware that when people are in need of housing, they are prepared to tolerate some disadvantage but this was an occasion when the Executive felt it could make a difference through its revised conclusions, following discussion of new material considerations. These included the appreciation of the siting of the proposed housing on the airfield site and its proximity to the runways, the physical containment of the Home Farm site and the better relationship of that site with the existing developed village, in the

A. Downes

## OLNEY MOBILE CARPETS

Carpets & Vinyls supplied and fitted  
*32 years fitting experience*

Choose in the comfort of your own home.

All makes: Huge selection. Friendly personal service.

Free fitting. No shop overheads, so better prices.

Ring Tony on Olney (01234) 713296, Mobile 078 5058 0347.

6 Overhills, Olney, Bucks MK46 5PP

## Letters Continued

Members' opinion. The Executive concluded that in this instance the 'Previously Developed Land' status of the airfield site should not outweigh the relative advantages of the Home Farm site.

In considering the factors contained within PPG3, Councillor Matthews is entirely sincere in his search for the best outcome for Cranfield. The task is not easy and I can only surmise that that if your meeting had instead been considering the airfield site, as MBDC's preferred option for large scale housing development, it would have attracted another large group of objectors and few protagonists.

I have little comment to give regarding the position of the Local Education Authority (LEA). It appears that there was some misunderstanding on the part of the LEA representatives as to the nature of the meeting they were attending.

District Council officers, when addressing development proposals will ensure that necessary infrastructure provision will be part of subsequent legal agreements. Contrary to what appears to be a fixed opinion in your final sentence of Page 2, it is my understanding that MBDC officers are keen to arrive at potential solutions to the requirement for additional land to meet the needs of an enlarged Lower School, by mutual agreement with parties including the Parish Council.

Finally, I wish to re-iterate that both Councillors Bastable and Matthews are the first to safeguard and promote the interests of the Parish of Cranfield, when considering the many complex issues which appear to confront us on a regular basis at Mid Beds.

Very best wishes to your Council  
Patricia Turner

## What's on

**Saturday 12th February ...** Valentines Disco at the Football Club from 8pm. Tickets £3.50 in advance or £4.00 on the door. Tickets available from Pre-School sites, the Football Club or Hayley on 752113.

**Saturday 12th February** Cranfield Methodist Church Lunches served 12.30 - 1.30pm Menu: Melon Boats. Roast Pork, Stuffing Balls, Seasonal Vegetables, Roast and Creamed Potatoes. Fruit Crumble and Custard. Tea/Coffee. Price: £4.50. All Welcome

**Monday 21st February.** Cranfield WI. 'Car care - Woman drivers alone'. Mr P Carty. Meetings are in the Cranfield Village Hall. 3rd Monday in the month at 8 pm.

**Saturday 26th February** Murder Mystery at the Music Hall - 7.30pm Cranfield Lower School PTFA Put this date in your diary now to come and enjoy a winter evening of mystery and intrigue - can you find the clues and guess whodunit?

**Saturday 26th February** Black and white photo session at the Carpenters Arms from 10am to 11.30am. all Welcome. Please contact Kerry on 750088 to book a slot in advance or turn up on the day. In aid of Acorn Pre-School

**Saturday 26th February 2005** Millennium Hall, Moulsoe Village - 'STRESS BUSTER DAY' Enjoy a day of complete self indulgence. To book a place in the first instance or for further information regarding the Tara Shanti event please call Pat Baker (01234) 391254 (answerphone) or Beryl Bond (01234) 751580 *There will also be a raffle held on behalf of the Tsunami Appeal*

**Every Tuesday in Term Time -** Parent & Toddler Group, North Crawley Village Hall from 10.00 to 12.00. People from Cranfield are very welcome to attend.

**Every Friday** Cranfield Mums and Tots in the Village Hall 9:30 TO 11:15 - £1.50/£2.00 per session Parents, Grandparents, Childminders etc are all welcome.

**What's on at The Cross Keys** Improvers Bridge 8.0pm on Mondays. New members welcome. Conversational French, Food Hygiene Certificate, Emergency First Aid Tel: 750213 after 5pm to express your interest. 1st Tuesday in each month at The Cross Keys Book Club 7.30-9.30pm. Lively discussion in a relaxed setting. All welcome. Plus the usual darts and dominoes. All welcome.

**Every Tuesday** 'Sounds Familiar' meets @ 7:30. Where? Cranfield Baptist Church, Bedford Road. Four part harmony choir, SATB, singing wide range of mostly sacred music, but some secular too. Fun, relaxing and rewarding. Come along and give it a try.

**Gardening Club** We meet the 1st Wednesday (8pm) in each month. For further information please contact Joan Last (750738)

**Every Friday** 9.30am to 1.00pm. Citizens Advice Bureau at Doctor's Surgery, Marston. By Appointment Only. Open to all Cranfield residents. Phone: 01234 766551.

**Parish Council meetings :**  
**February 2nd** Cranfield Parish Council (Committees) 8 pm Village hall  
**16th** Cranfield Parish Council (full council) 8 pm Village hall  
**March 15th** Cranfield Community Safety Group 7.30 pm Portnall Place tel 01234 757689

**Saturday 12th March** Craft Fair at the Village Hall from 2pm to 4pm. Further details and Booking information can be obtained by contacting Hayley on 752113 or Suzanne on 751222. Entrance £1 or half price concessions for OAP's.

**For Village Hall  
Bookings  
Please Phone  
01234 750023**

### Jonathan Sayeed MP

Your MP, Jonathan Sayeed, can be contacted at the House of Commons, London SW1A 0AA - Telephone 020 7219 2355, facsimile 020 7219 1670, or at his constituency office: St Michael's Close, High Street, Shefford, Beds SG17 5DD - Tel: 01462 811992 - Fax: 01462 811010.

**Advice Centre Date by appointment only  
(01462 811992)...**

Friday - February 11th - Cranfield Village Hall 4.00 - 6.30pm



### Methodist

**10am** Morning Service and Sunday School  
**6pm** Evening Service on the first Sunday in every month.  
**Fortnightly**, on Tuesdays at 2pm, The Ladies Fellowship meet

**Thursday 6pm** Sunshine Corner (Children up to 8) 7.15pm Thursday Club (Children 8-12 years)

Rev Gordon Sollis 01234 751886  
Nora Salisbury 750279

All Welcome

## CRANFIELD CHURCHES

### Parish (C of E)

#### Sunday

**8.00am Holy Communion** 1st and 3rd and 5th Sundays  
**10.30am Morning Service**  
2nd & 4th - Holy Communion  
3rd Sunday - Family Service

#### Weekdays

**Wednesday 7.30** CYFA meet in church  
**Thursday 7.30pm** Bellingring Practice

#### Contacts

Rev Hugh Symes-Thompson 01234 750214  
Carol Rubini 752204  
Andrew Pearson 751358

[www.cranfieldchurches.org](http://www.cranfieldchurches.org)



### Baptist

**10.45am** Fellowship and Sunday School

**Wednesday 7.45pm** Home Group  
**Thursday 7.45pm** Cyber Café, Ages 10-16.

Steve Lloyd 01234 751495  
[www.baptist.org](http://www.baptist.org)

## Cranfield Community Safety Group

Pc Steve Barrable is the acting beat manager for Cranfield. Steve has 20 years service, having worked at Luton Police Station for three years and been at Ampthill after that.

The area that he patrolled the most whilst at Ampthill was the patch that included Cranfield, so he knows it reasonably well and of course he has seen a lot of changes out that way over the years.

Steve has already attended a Community Safety Group Meeting to discuss local issues and been invited to the next meeting at Portnall Place on March 15 (7.30 pm). He says: 'I've spoken to a number of local residents regarding general security advice. I am aware of the problem of the Cruisers near the Nissan site and have liaised with Thames Valley Police Officers who have similar problems. I've already started to get to know some of the local youngsters and hope to spend as much time as I can in the village getting to know people.'

• Cruise control: Officers attended the area of Nissans and the Innovation Centre last month due to a report of cruisers. One of the vehicles there was being driven in a way that concerned officers. When they checked further it turned out the driver had previously been warned about his manner of driving - and as a result his car was seized and taken off him.

• For more information about Cranfield Community Safety tel 01234 757689 or email pollock@cranfield68.fsbusiness.co.uk



## Community Spirit - Alive and Kicking in Cranfield

I have lived in Cranfield for just over thirty years, that's a scary thought, during which time I have heard it said on more than one occasion that there is no community spirit in this village. In fact I was talking to a lady only today, as I walked my dog and she walked hers, (great conversation starter, dogs), that she and her family have been in Cranfield for several years and live just a short distance from me, yet I had never seen her before, and I thought how sad it is that many of us don't even know who our neighbours are any more.

However, what is it about a crisis that makes us British pull together? I don't know, but the Tsunami disaster is no exception, it has touched so many of us, in so many different ways and we want to do something.

Well, 'Sound's Familiar' (this is the choir which sings each year at the Christmas Midnight service), which is made up of individuals from the locality, along with some 'special guests', from the community, are planning a very special concert, in aid of the 'Tsunami Appeal'.

Details are yet to be finalised, but we are hoping it will be mid March, in the Parish Church, as it will hold a lot of people and we are anticipating a mammoth response from the village, for this very worthy cause.

Watch this space, and look out for posters giving all the details, which will be distributed throughout the village very soon.

Let's show Cranfield that we can still manage Community Spirit.

Jean Lloyd

## EAR to the Ground! Need some information? Got information to give?

That's why I'm EAR!

The EAR to the Ground project is a new idea which involves a person holding a bag of information which will be available to all who need it. You can ask for details regarding a subject or a local group and the "EAR" can provide you the relevant information. This can be any information such as who to contact for details on benefits right down to bus timetables. The idea comes from the healthy living initiative and was designed to help all who need information. Please feel free to contact me if you need any information on any subject and I will try my best to help you. In time I will also be available to attend groups and give talks on what I do and how you can use the service. Your local representative is Lucy Tompkins and her contact number is ... 07709 959 068.

## Parish Council Notice

The next Parish Council quarterly surgery will be held at the Village Hall on the 9th February 05, to commence at 7.30pm.

## Freedom Dance School

Freedom Dance School offers a mixture of modern, pop, freestyle dancing for children aged 4 and above. Classes are back! For more information please contact Karen Bailey - Principal of Freedom Dance School on 07974 376458.

## LOST

In Wood End on 16th January a leather dog training lead. If found please telephone 01234 750546

## This Space Could Sell For You!

"Anyone know where I can get a bike with one pedal?"

**'Cranfield Express Your link to Local Success'**  
Tel: 01525 280 262  
or 07739872956

## Cranfield Express

Your adverts are seen in over 2,000 homes locally and across the world at [www.cranfieldexpress.co.uk](http://www.cranfieldexpress.co.uk)

## Cranfield Critters Club

The Critters meet every week in the Village Hall. On the first and third Tuesdays we meet at 10am, one hour before clinic, then on all other Tuesdays it is 1.30pm. There is no charge to attend just a small donation of twenty-five pence for tea and coffee. The group is for children aged up to two and a half.

Contact Lucy on 01234 751105

## Murder Mystery Evening

Cranfield Lower School. Saturday 26th February 2005 Murder at the Musical Hall. For all budding Cranfield sleuths - come and enjoy a three course meal and see if you can solve the mystery.

For further details call Paula Tel 756161 (eves 6-9pm).

## The Social Club

Wharley End  
**Friday, 11th Feb**  
8.45 pm  
**Dynamite**  
(The Party Duo)  
**In the Function Room**  
**Friday 18th Feb**  
8.45 pm  
**Stax**  
(Soul/Funk/Disco and Reggae)  
**Friday 25th Feb**  
8.30 pm  
**Matrix**  
(70's Disco)  
**Tel: 01234 751586**



## Servicing MOT

For all makes of cars

Our fully equipped workshops can handle any work your car may require. We pride ourselves on our quality of work and excellent reputation built up over 40 years trading in Cranfield.

**Sports cars bought and sold**

119 High Street Cranfield  
Tel 01234 750 205  
[www.allonwhite.co.uk](http://www.allonwhite.co.uk)



measured  
 made  
 fitted

up to  
**50% off**  
selected  
blinds

## blinds

verticals ■ rollers ■  
pleated ■ venetians  
■ romans

call us now for fast,  
local service  
**freephone**  
**0800 916 6563**

**Hillarys**

## Audi alteram partem

Hear the other side.

In sixteenth-century England many of the unusual happenings in life were habitually put down to the effects of witchcraft... that cannot be so to-day, or can it?

A ridiculous suggestion, I hear you say, yet, John Prescott, our Deputy Prime Minister, who has brought so many convulsions upon England through his dictates in the field of housing provision, certainly appears to have influenced the behaviour of planners and elected representatives alike, to such an extent, that they are willing to concur, with what many believe to be, his erroneous viewpoint, that hundreds of thousands of new houses can be built on England's green and pleasant land, especially in towns and villages, without a feasible planning strategy, that would sustain them. In truth it would appear that our planners, and elected representatives at all levels of Government, have not considered, nor feel the need, to enforce a Planning Strategy, when permitting applications for small and large scale housing developments.

Their attitudes sow seeds of grave concern and doubt in the minds of the electorate, who start to believe that there is a lack of will and courage in their approach to these matters. Not the expectation of the voters on polling day? If one considers villages such as CRANFIELD, Salford, Woburn Sands and others situated in Mid-Bedfordshire, then the question must surely be put.

"Can the establishment of large and small scale housing developments in towns and villages situated in Bedfordshire, on the periphery of Milton Keynes be justified?"

### The answer must be... NO!

It must be acknowledged that the NEW TOWN of MILTON KEYNES will continue to grow, until finally it will double its present size. It will, over a period of time, welcome over 200,000 new residents. Sooner, rather than later, it will achieve CITY status. Unlike 'CRANFIELD' it will be re-developed using all the excellent Planning Strategies that were incorporated in its original concept. New sewers, New roads, New industry and commerce, New job opportunities, New Social, Educational, Administrative and other Public Buildings. New Hospitals and Clinics. New Doctors and Dentists Surgeries, New Leisure and recreational facilities. New Transport Services and Public Utilities. Improved Road, Rail, & Air Services. All these and many other disciplines will be incorporated in the New City, of Milton Keynes. Without them the new enlarged City would prove to be a failure.

### Then what about Cranfield.?

Planning at CRANFIELD is flawed. Why? Because there is no planning strategy, No transport policy, No planning gain. Only more and more houses with no accompanying infrastructure.

Ebenezer Howard, who planned and established the first Garden City at Letchworth in 1903/1904, was in those far off days able to identify the needs of the people. The excellent towns of Letchworth and Welwyn Garden City are monuments to his memory. Surely there must be a few present day Ebenezer Howards in our midst?

At Cranfield, in Bedfordshire, an application for 400 houses is being considered for the Home Farm site, while a further 425 houses may be built on the airfield site sponsored by the University authorities, subject to a probable planning appeal. Another 21 dwellings may receive planning permission, on the former public house site at Broad Green. Despite all the fears and objections, (past and present) of Cranfield people, our local councillors have voted unanimously to support a planning application for a further 28/31 houses to be built at Lincroft where the High Street is the only location for traffic entering or leaving Lincroft. Sight lines at the junction of the High Street and Lincroft are totally unsatisfactory (due to poor traffic management) A third bite of this particular cherry!

### There is more!

It is alleged that local councillors will support a planning application for twenty houses to be erected at the Central Motors site, with perhaps 100 more to follow at a later date, all **with sole access to and from the High Street.**

Traffic congestion in our High Street, is growing daily, and will continue to increase, as the new enlarged Milton Keynes is built. It must be obvious that our High Street has become the main artery (a rat run) for traffic seeking to gain access to and from Milton Keynes, from Bedfordshire and the surrounding counties. All of which means that our High Street and its surrounds, will become more hazardous for the young, the not so young, and the elderly. Sooner rather than later the situation will become untenable. It becomes increasingly more difficult to understand the minds of our planners, and the motivation of the councillors we elected, where planning decisions are concerned. They would appear to act like lemmings, in their headstrong rush to build houses in every location, undermining the village of Cranfield in their endeavours... Perhaps it might be useful to re-consider sixteenth century practices after all. They might prove to be more rewarding.

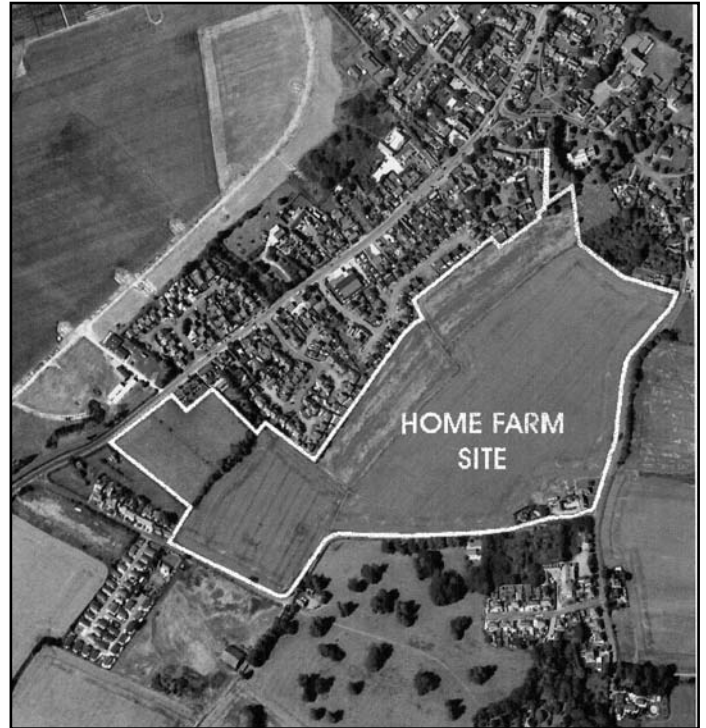
John J. Doyle

### Note from The Lower School

If your child will be four years old before September 1st 2005 and you wish them to join us as a pupil then you must submit an Application For Admission Form by 21st March. Forms are available from the school office or from Acorn Pre-school.

Mrs B J Stubbings, Headteacher, Cranfield V.C. Lower School, Court Road, Cranfield, Bedfordshire, MK43 0DR. Tel/Fax: 01234 750261

## Help to Shape the Future Development of Home Farm



### The Home Farm Site outlined in white

Local residents will be aware that Mid Bedfordshire District Council has allocated Home Farm in its Local Plan to be developed as a new residential neighbourhood. Building on ideas from the Community Planning Day held last summer and discussions with a number of groups, the Council has prepared a Draft Development Brief which it would like comments upon. Comments will be taken into account by the Council before finalising the Brief later in 2005.

The Draft Development Brief is written to guide how future development of the new neighbourhood should take place and ensure it comes forward in a co-ordinated fashion. The site is very important in the context of Cranfield, bringing a growth in population and the need and opportunity for new community facilities.

Consultation on the Draft Brief will last for 6 weeks starting 17th February until 31st March. An exhibition of the Brief's proposals will be displayed at Budgens Supermarket over this period.

In addition, Council Officers will be available to answer questions on the following days when the exhibition moves to the Methodist Church, High Street, Cranfield:

Saturday 19th February 10am to 2:30pm

Thursday 24th February 10am to 5pm

Friday 25th February 10am to 8pm

Saturday 5th March 10am to 2.30pm

Thursday 10th March 10am to 5pm

Copies of the Draft Development Brief will be available to view at either of Mid Beds District Council's offices in Ampthill and Biggleswade or from the Council's website: [www.midbeds.gov.uk](http://www.midbeds.gov.uk) from 17th February.

Copies and further information can also be obtained by contacting: Duncan Jordan, Planning Policy Section, Mid Beds District Council, 23, London Road, Biggleswade, SG18 8EX. Tel: (01767) 602334.

Email [local.plans@midbeds.gov.uk](mailto:local.plans@midbeds.gov.uk)

## Parish Council

In an effort to create awareness of the parish council's decision making processes the Cranfield Express website ([www.cranfieldexpress.co.uk](http://www.cranfieldexpress.co.uk)) will carry up to date material this month about recommendations from committees (meeting on 2nd February) going to the full council meeting on 16th February. Visit the express website from 9th February onwards to check on recommendations. Minutes and agendas can also be obtained by emailing [cranfield@villages.bedfordshire.gov.uk](mailto:cranfield@villages.bedfordshire.gov.uk) or by checking parish council noticeboards in the High Street, the Village Hall, the Recreation Ground and Crane Way.

## Love is the Key

In the aftermath of one of the world's most terrible natural disasters, it is difficult to know where to begin.

On Christmas Eve the Church of St. Peter and St. Paul, Cranfield, was full for the ecumenical service of Holy Communion. Members of all of the churches in the village, along with others, perhaps reaching out for a deeper meaning to life, shared in the celebration of God's Gift of His Son. A Gift of Love, of Light and of Life.

On Christmas Day the Queens message couldn't have been more poignant. She used the parable of the Good Samaritan (Luke 10. 25-37) to illustrate the fact that everyone is our neighbour, whatever their race or creed. We should live together, participating and cooperating for the sake of the whole community. Over the ensuing days, that community expanded to take on global dimensions.

On Boxing Day, the news was just breaking about the tsunami and its horrendous consequences. We are so used to having disasters on the television and in our newspapers, that we have had a tendency to become immune to such images. Perhaps it is the only way we can protect ourselves from the bombardment of both man made and natural horrors. In this case there was no escaping as the scale of the disaster unfolded. Each day the headlines were more heart rending. "The desperate search, the intolerable grief." Individual stories and images of parents cradling dead children in their arms made the pain more real. The estimate of those lost soared by the day. Strangers helped and comforted each other. The palpable grief unleashed a flood of generous giving. This has been unprecedented.

Some shadows also emerged. As well as the logistics of a devastated infrastructure, aid was being hampered by red tape and political situations. There were unresolved conflicts. There was the inevitable looting. There were even tales of people exploiting the situation by child trafficking. Nearer home there were reports of collection boxes having been stolen. Man can be tempted to give in to a darker side of his nature that stems from greed, self interest, power and even territorial rights.

There seemed to be a national consciousness, not only informed, but formed by the media.

After the shock of grief, there was the need to blame. God got a fair amount of stick. We live in a beautiful but fragile world. Tectonic plates shift and natural disasters occur. I don't believe that this is retribution for sins committed or a portent of the end of the world. With our limited human capacity for comprehension, we cannot know the Nature or Mind of God. Through faith, we can trust that God knows our plight and is with us in our sorrow. Many may prefer not to believe. "How could God let this happen and so many innocent children die?" No-one can answer that question. Believers and non believers must look for the good that could, and must come out of this situation.

If, like me, you have been following the news avidly, you will know all of this and lots more. Alongside the news of the tsunami has been that of the fight against world poverty.

There is so much that needs to be done. The spotlight has been on one particular area of the world. In Africa and elsewhere the plight of people suffering the effects of AIDS and poverty are horrendous.

Giving of our money is a good start. I believe we need a new vision to see the world through new eyes.

On Boxing Day another event occurred that became swamped by the world news. In the Ukraine, peaceful people power had resulted in a re-election of their leader. Wrongs had been righted; corruption wasn't tolerated.

The world, that is you and me, needs to stand up for what is right. There will always be those who choose self interest and power for their own ends. However, the power of good must prevail for the sake of the future of mankind.

Perhaps I could be allowed to move on to Easter. God gave us His Son so that we would have not only a pattern but also the certainty of forgiveness and eternal life with and in Him. His message is Love, which demands a response from us. In the words of an Easter hymn: "Were the whole realm of nature mine, that were an offering far too small. Love so amazing, so Divine, demands my soul, my life, my all," *"When I survey the wondrous cross" Isaac Watts.*

There is no death of the spirit. Real life is eternal. This is the only way that we can cope with such scenes of death and devastation, heartbreaking though they are. There is a wider dimension, a bigger picture. We will all share this one day. In the meantime, may we all try to make the world a better place for all of God's children, both at home and abroad.

Dr Marjorie Cotton

## Tsunami @ the Uni Costcutter

Neela and Yashim would like to thank their customers on behalf of the tsunami appeal for their loose change and contributions over the last few weeks ... latest count reveals £76 plus and the bucket is still there.

*Coming Soon...*

## The Chronicles of Cranfield by Frank Lord

**A brand new look at the history of Cranfield as seen through the eyes of a Cranfield man.**

**This is a detailed picture of the community from the year 998 to the 1970's and includes newspaper reports, council notes and tales of life in the early 1900's.**

**"Truly the creaking  
of the parish pump  
is the murmur of  
the world"**

*Frank Lord, December 2004*

## CLOGS Conserves Habitat For Rare Butterflies in Marston Thrift

Marston Thrift is an important nature reserve, in which many rare and uncommon species of plants and animals survive, despite the pressures of modern life. One such species is the Black Hairstreak butterfly, which requires specific food plants and sheltered open fly-paths. One of CLOGS' objectives is to develop sectors within the Thrift that provide these conditions, so that the butterflies can thrive by colonising new areas of the wood. Currently, we are extending a clearing on the Marston side of the Thrift, with the long-term aim of connecting it to the internal path running from the car park, where there is an established colony of Hairstreaks. Of course, the coppicing will also benefit other woodland species. Anyone who visits the Thrift will see the benefits resulting from CLOGS' efforts in previous years. In mid-January, the signs of spring are already appearing, with leaves of primrose growing through the leaf litter, and the promise of carpets of bluebells later in the year. We are grateful to all of our volunteers for their support, and would like to make special mention of the Air Cadets from 207 (Cranfield) Squadron, who have regularly turned up in force, and set to work with enthusiasm. If you would like to join us, there will be three more Sunday working parties this season, on February 6th, March 6th and April 3rd. We meet at 10 am to light the fire, and work until about 3 pm. Most people bring some sustenance, such as a flask of coffee and some sausages to cook on the fire. Old clothes and stout footwear are essential. Tools and equipment are provided, and you are welcome to borrow our frying pan. Also, at 9.00 am on Sunday 17th April, we shall be carrying out our annual deer count. For further details, please call Angela and Clive Bucknall on 750421.

Solve the Mystery of the  
**Murder at the Music Hall**  
at Cranfield Lower School  
Saturday 26<sup>th</sup> February, 7.00 for 7.30 p.m.  
Three Course Meal Provided  
Bar Available. Ticket: £10.00



# **GIANT NEW YEAR SALE HUGE SAVINGS ON ALL MODELS OF FORD CARS**

**Ka's, Street Ka's, Fiesta's, Fusions, Focus's (including new ModelFocus) C Max's, Mondeo's, Galaxy's  
PLUS**

**12 months Free insurance on selected models**

**A minimum 15000 nectar points with every new purchase**

**Call us for further details**



**Garages (Cranfield)  
Limited**

**High Street, Cranfield, Beds  
MK43 0DG**

**Tel 01234 750207**

**[www.rgr-garages.co.uk](http://www.rgr-garages.co.uk)**



## The Country Players



Will be presenting the pantomime "Cinderella" at Wootton Village Hall on Thursday 3rd and Friday 4th February at 7.30 pm and matinees on Saturday 5th and Sunday 6th February at 3.00 pm. Tickets priced at £5.50 and £4.50 concessions are available from the Central Box Office on 01234 269519 or Wendy Field on 01234 401460

This is a new version of the old favourite, Cinderella, written by Jim Sperinck, but tells the traditional tale of the downtrodden Cinderella with all the familiar characters, such as Buttons, Dandini, and of course the Ugly Sisters. This year, in a break from tradition, the handsome prince will be played by a boy, Wootton Upper School pupil, Richard Taylor, and his sister, Victoria, will be playing Cinderella. There is lots of fun for all the family with humour from the three stooges and plenty of audience participation.



Photo's courtesy of Ian Miles, Flashpoint Pictures

## Tsunami Collection at the University



In a remarkable one day collection task volunteers homed in on schools and departments. The response was dramatic as loose change and meatier donations bounced into the buckets from staff and students alike.

Money is still coming in for the collection but on the day with the buckets over £1700 was raised and currently the total is in excess of £2000 with more expected from the forthcoming School of Management's 'Dress Down and Fundraising Day.'

The photo shows some of the volunteers ready to carry out their sortie... "As many people had already donated in some way, it was fantastic to collect so much in one day." Sarah daCosta, Volunteer Coordinator, Cranfield University Students' Association

## Cranfield Bridge Club Tsunami Event.

Normally, Cranfield Bridge Club holds just one charity event per year, usually in June and in aid of a local charity; the date being published many months in advance, with detailed planning many weeks before the event.

In response to the Tsunami Earthquake Disaster Appeal, we decided to run an additional charity event at only two weeks notice, on Sunday 16th January; making us, to the best of my knowledge, the first Bridge club in the area to take such action. To maximise the sum raised, we decided to donate £100 from club funds instead of paying for all expenses (as we would normally do), and to seek donations to avoid those expenses.

So we have approached local businesses for donations of prizes, and they came up trumps with their generosity, helping us to raise a grand total of £417.70, which we shall round up to £425. The raffle, organised by Margaret Wilson and Rosemary Hutchings after preliminary work by Rod Raynor, raised £137 of the total, a club record. Our thanks to Cranfield Campus Social Club, and the business community of Cranfield, for making this possible.

The Bridge competition, directed by Paul Goddard and scored by Rod Raynor, had a smaller entry than we had hoped for, possibly because Bridge Great Britain organised Simultaneous events raising funds for the appeal throughout the rest of the week; Enjoyed by all, our event was won by Val Lawson and Les Calver (65.08%), with runners up Florence Followell and Tony Philpot (60.32%)

The Country Players present

# TOAD OF TOAD HALL

BY A. A. MILLS

WOOTTON VILLAGE HALL

JANUARY 31st  
FEB 1st & 2nd

at 7.30 pm  
Thurs & Fri  
Sat 3.30 pm

Tickets £5/£3

Tickets: Central Box Office BED 269519  
or BED 315391

Think Valentine's  
Think Mother's Day  
Think Weddings  
Think Celebrations  
Think Easter  
**THINK CHOCOLATE!!**

Limited dates available, book your Spring chocolate party early. Please call Carol Terrell on 01234 750149. Commission and free gifts apply.

**Cranfield Express is the key to success for local Business**

**Don't Let Your Competitors Freeze You Out - Check this space for a quote**

Tel: 01525 280262 or 07739872956

adverts@cranfieldexpress.co.uk

# Who Remembers Qurat-ul-Ain Tabassum ... better known as Anee?



**This is Anee from her last day 1st year, St. Patrick at Holywell Middle School. Mrs. Pollot was the class teacher**

*The following message has arrived and anyone who remembers Anee and would like to contact her again you may do so through Cranfield Express. Contact info for CE is on the front page or you can leave your own contact info at either of the papershops or the Uni Costcutter and we will make the link. Ed*

**Hello to my friends at Cranfield.** I found your website today when I was sitting in one of my nostalgic moods looking for a link to the past. It was such a wonderful surprise!! my old schools, the place where I grew up, just wonderful! I have for ages been looking for a way to find contacts of my old friends, but in vain. I really dont know what to do, I

wrote to the schools but perhaps they did not receive my letters or they can't provide the info. I left Cranfield back in '89 and Mr. Bell was the headmaster at lower school Then I went to Holywell for a few months. I'm looking for Roger Dix, James Campbell, Scott Pointon (I was a bit of a tomboy) and few others I used

to know from school. They all lived in the village but dumb as we were, no one thought to exchange addresses back then. So much must have changed since then. I am now an electronics engineer and hope to come to CU for an MBA soon. My father is an alumni himself.

Anee

## The Primex Internet Group Ltd Delivering the promise!



**ADSL  
Broadband!!!**

**Change your business  
phone bill to Primex and save  
£££££!**

**Broadband ADSL upto 40 times faster**

**Anytime Unmetered service**

**0870 Marketing numbers**

**Domain names**

**Email services**

**0845 dial-up**

**Websites**

**Our Sales phone number 0870 774 0312**

**Email: sales@primex.co.uk**

**Managing Director: Andy Perrett**

## Things You Might Like to Know About Primex

### "Longer lasting..."

The Primex Internet Group Ltd started life in the mid nineties, and therefore, is one of the longer lasting ISPs in the market place. Primex has seen many other ISPs come and go with their gimmicks but our straight forward no nonsense honest approach to Internet services has remained true throughout the years. Our approach is to provide a solution to suit your needs whether you are a home user, a small business working from home or a much larger business.

### "We simply listen..."

When you first contact Primex we simply listen to what you are saying. Together we can work out exactly what is needed and can either supply you with an off the shelf type package or will suggest a completely tailor made solution.

### "The very best technical support and knowledgeable staff..."

Primex "doesn't do cheap" services. That has been done to death and has proved a failure with people needing a solid and safe provider for their Internet Services, but instead we prefer to offer value for money, reliable services backed by the very best technical support that you will find anywhere delivered by knowledgeable and helpful staff. There are many other ISPs that "just" deliver the standard Internet access and email package, in fact, all ISPs do this, but if you require something extra then Primex has the difference...

### "And the difference is..."

Our support telephone number is a standard national rate call, and we don't use premium rate numbers! If you receive our answer phone upon calling we will call you back. We never sell your contact details to third parties and our support staff have access to server logs to track any faults and we never use crib sheets to help answer your questions. We don't use a call centre and staff are never in a hurry to get you off of the phone. If you need help with anything we'll help, if you have problems working with XML, HTML, Databases, mail shots or even PHP and Perl we're still happy to help and when you contact Primex we treat it as an opportunity to impress you with our second to no one type service.

### "The chance to prove..."

What ever your needs, give Primex the chance to prove that we are the right choice for your business.

## Holywell School Christmas Concert 2004



On the evening of 15th of December in the beautiful setting of the Church of St. Peter and St. Paul, Holywell School held their Christmas concert.

The event began with the Choir singing two gentle pieces directed by the Head of Music, Miss Halsey and kindly accompanied by Mr Hunt. The first piece was a new version of 'Away In A Manger' composed by a 15 year old GCSE Music pupil and the second piece, 'Christmas Tide', with a solo sung by Year 8 Tenor, Simon Jackson.

Next the mood changed completely with an upbeat trumpet solo of 'I Saw Mummy Kissing Santa Claus' performed by the talented 'Young Musician of The Year' entrant, Thomas Syson.

The Flute group directed by Peripatetic teacher Mrs Sear, performed a seasonal favourite 'Oh Come All Ye Faithful' followed by a charming vocal solo of 'Mistletoe and Holly' performed by the soprano Tabitha Price under the direction of Singing teacher Mrs Veitch.

Two Year 6 violinists, Chloe Daisley and Bethan Chalmers, performed the duet 'O Leave Your Sheep' and then there was a haunting Flute solo by another gifted Year 6 musician, Amy Mirwald.

To end the first half, we welcomed back Mrs Sear with the Clarinet Group who performed a toe-tapping 'Three's Company'.

After the interval, the Choir sang again directed by Miss Halsey and accompanied by Mr Hunt. They performed another new version, this time it was based on the traditional 'In The Bleak Mid-Winter' composed again by a 15 year old GCSE pupil. The second piece was the time-honoured favourite 'Angel's Carol' by John Rutter which was enhanced by the acoustics of the Church.

Guitar teacher Mr Waterhouse accompanied his Guitar trio: Gabriella Bartrop, Elizabeth Lane and Hannah Shepherd who played 'God Rest Ye Merry Gentlemen'. This was followed by the school Wind Band playing the family favourite 'Supercalifragilisticexpialidocious' and then an arrangement of 'We Wish You A Merry Christmas' composed by Miss Halsey specifically to meet the needs and abilities of the pupils, most of whom have only been playing their instruments for only a few months. She was really pleased with the pupils as it was a challenging piece for them involving solos, duets, trios, vocals and standing up at certain times which all had to be exactly in time for the piece to work.

Mrs Sear was welcomed back with her third group of the evening, the Saxophone Group. They performed the traditional 'The First Noel'.

The penultimate performance of the evening was a lovely oboe solo played by Year 8 pupil, Amber Lawson and accompanied by Miss Halsey. The piece was 'Walking In The Air' originally made famous by a young Aled Jones in 'The Snowman'.

The concert ended with the Orchestra directed by Miss Halsey and accompanied on piano by Mr Hunt who performed 'Oh Come All Ye Faithful', 'We Three Kings' and 'Goldfinger'. The last piece was bought for the Orchestra by Year 7 Trumpeter Tom Harris and successfully ended the night on a literal high note!

The evening was a great success and enjoyed by both audience and performers. Miss Halsey would like to thank the Church for hosting the concert and the wardens for opening the Church for the afternoon rehearsal, all staff who helped walk the children down to the Church and printing the programme, Mr Cauldwell for moving all the equipment to the Church and providing interval refreshments, Mrs Follet for supervising the pupils during the concert, Mr Hunt for accompanying Choir and Orchestra, all of Holywell's Peripatetic teachers and particularly Mrs Sear, Mrs Veitch and Mr Waterhouse who rehearsed groups and attended the concert. Finally, Miss Halsey would like to thank all of the children from Holywell School who have worked so hard for many weeks in rehearsals and their parents/guardians who support and enhance their music making at home. An enjoyable time was had by all and we look forward to the next concert.

## Beds in Beds

[netletcranfield.co.uk](http://netletcranfield.co.uk)

In August 2004, Cranfield University joined forces with Netlet, a website service that provides the only source of university approved private sector accommodation for students. As well as providing a one-stop shop for students looking for accommodation, Netlet also provides additional online services such as a safe, secure student to student noticeboard and comprehensive advice section, both of which have been a huge success amongst students.

The Netlet Cranfield site, [www.netletcranfield.co.uk](http://www.netletcranfield.co.uk), despite getting off to a slow start, has already proved to be extremely popular with students studying at Cranfield University. In September, Netlet recorded 4,326 searches on the site. This level of activity is comparable to other successful sites at the London School of Economics and Bradford.

Following a recent focus group held by Cranfield University, the students voiced a number of suggestions and comments regarding Netlet. It was noted, that many of the students were looking for more properties to rent within Cranfield Village itself.

It is hoped therefore that in 2005 many more landlords with properties available for rent in Cranfield Village will register. As an incentive, Netlet are offering a 50% discount on the normal registrations fees. Peter Dixon Residential Services Manager at Cranfield University said "We were very pleased indeed with the support that Netlet provided with the introduction of the website and we can only see a continued growth in its popularity and increased support for students in identifying and securing accommodation off campus. Obviously we would be delighted to see an increase in the number of landlords/properties registered on the website in Cranfield village as these are particularly popular and in great demand due to the close proximity to the university "

Students also requested more interior photographs of properties so that they could get a better idea of what the property looked like inside.

Louise Rodger of Netlet said: "Many of the students who attend Cranfield University are not resident in the UK. Therefore, the Netlet Cranfield website is essential in enabling them to secure lodgings prior to starting university. Photographs online help them to see what the property looks like and therefore they can make a decision from thousands of miles away without even physically seeing the property to rent".

To view the Netlet service or to register as a private landlord please go to [www.netletcranfield.co.uk](http://www.netletcranfield.co.uk), or call 0870 760 5611 for more information.

Louise Rodger

## Fundraising for the TSUNAMI APPEAL

**AQUABOX** is an official project of Rotary International in Great Britain, and has now been established as a Charitable Company.

The Amphyll Branch of the Rotarians is looking for groups in Cranfield who would be willing to fill an **AQUABOX** with enough essentials to provide one family with the basic welfare needs, i.e. Clothing, Eating and Drinking, Hygiene, for a Baby, for Sleeping, for shelter and some general items, but no food. At the bottom of the box will be a water filter and purification tablets to enable the provision of safe drinking water. When filled, transit will be arranged by the Rotarians

If you can persuade your group to get involved in this project, please contact John Peat, Telephone No: 751421, who will provide an itemised list and **AQUABOX**. Details of this project can be seen on the website, address: [www.aquabox.org/contents.htm](http://www.aquabox.org/contents.htm).



1996



## MEC MATTHEW McHUGH ELECTRICAL

INDUSTRIAL PREVENTENANCE MAINTENANCE

MEMBER OF THE ELECTROTECHNICAL CERTIFICATION SCHEME  
TELEPHONE :- +44 01234 - 750649 \* 07860 - 645081 \* 001 954 926 8791  
(USA).

FAX +44 01234 751984

Email [mec1@onetel.net.uk](mailto:mec1@onetel.net.uk)

PROPRIETORS :- M. McHUGH. J.A. McHUGH.

# CUFC Results by Larry Corkery

## Cranfield United 3 Amphill Town 3

Saturday 18th December

It goes without saying that when it comes to local derby matches the form book becomes irrelevant. Amphill came to Crawley Road with no wins, only three draws and very few goals to their credit this season. They certainly started as underdogs but shook the home side rigid by running up a 3-0 lead in the first 30 mins. The home side did eventually pull themselves together to take control of the remainder of the game but their early defensive sloppiness had left them with a colossal mountain to climb. To their credit they did claw back that three-goal deficit and with a little bit of luck could have won the game.

The problems began with Amphill's first attack when Drew, Goddard and Allison were all guilty of "fanning about" on the edge of the penalty area to let in Scutt to open the scoring. If that wasn't bad enough the entire middle of the defence went missing in the 16th minute when Taylor latched onto a sloppy pass in the centre circle then ran unchallenged into the penalty area to add the second. In the 30th minute Hall was granted a similar freedom of passage to make it 3-0.

Within 1 min New set up Pilgrim to reduce the deficit, then in the 37th minute New fired home from close range to make it 2-3. In quick succession Pilgrim fired over the bar and Scott saw a fantastic save deprive him of what looked like a certain equaliser. The home side then dictated the entire second half. Early on Watt and Pilgrim both came close but it was not until the 69th min that Pilgrim levelled the scores.

In the 77th min Scott was again foiled by another brilliant reflex save and Pilgrim following up fired wide of the

post. As Cranfield pressed forward looking for the winning goal they again became careless at the back resulting in the visitors almost snatching all three points in the final minute. Fortunately Templeman smothered the shot and saved the day.

Team :- S.Templeman, D.Goddard, S.Drew, A.Allison, L.Ingerson, A.Watt, M.Griffiths (Woodin 48th min), J.Dudoic, S.New (C.Cameron 61stmin), N.Scott, D.Pilgrim

## Cranfield United 1 Biggleswade United 3

Tuesday 28th December

Biggleswade United came to Crawley Road as the table leaders and made it quite clear from the kick off that was where they were going to stay. Most of the 1st half was a closely fought battle with neither side giving away much in midfield. As a result few clear cut scoring chances were created but at one time or another both sides did cause uncomfortable moments for the opposing defence. In 21st min Templeman was called upon to block a scoring opportunity then seconds later could only stand and watch as another flew narrowly wide of the posts. Cranfield's best move of the half came when Ingerson and New linked up well in the 42nd min for the latter to drive the ball into the side netting. Within a minute the visitors broke the deadlock with a bizarre goal when Hewitts drive cannoned off Goddard and flew high over the stranded Templeman's head into to the Cranfield net.

The second half opened very much in the same vein but as time progresses the visitors forward play became more and more fluid and the home side's more disjointed and ineffectual as too many critical passes were misdirected. The visitors increased their lead in the 65th min when Dimmock pounced on a loose ball in the penalty area and it

looked all over for Cranfield. The introduction of Dudoic into the attack added a little more bite and another dimension to their game but they still could not break down the visitors defence. That was not achieved until the 83rd minute when Ingerson finished a great solo run with a well taken left footed shot to make it 1-2. Sensing the chance to salvage at least one point Cranfield pushed forward and paid the price for becoming a little reckless when in the 88th minute when Odell broke free to drive home Biggleswade's third goal and put the result beyond doubt.

Team :- S.Templeman, D.Goddard, S.Drew, A.Allison, L.Ingerson, A.Watt, M.Griffiths, C.Cameron (Woodin 25th min), S.New, N.Scott (J.Dudoic 68th min), D.Pilgrim

## Cranfield United 1 New Bradwell 2

Saturday 15th January

New Bradwell came to Crawley Road full of confidence having won 8 out of their 9 away matches this season and were lying in 5th position in the table. Cranfield on the other hand found themselves struggling with five players missing from full strength.

The first half turned out to be a pretty dour affair with neither side getting the upper hand. Cranfield started the game brightly with Watt and Dudoic combining well to set up Ingerson with an early shot on goal but the visitors soon rallied to force two corners in quick succession. It was not until the 29th minute that the game really sprang to life when Templeman made a diving save and tipped the ball round the post. In the 33rd minute that weekly phenomenon of a "black hole" in the middle of the Cranfield defence reappeared allowing Wells to nip in to take the lead for the visitors.

The beginning of the second half proved to be totally different and it was only the woodwork and an inspired Templeman that saved Cranfield being on the wrong end of a three or four goal deficit. Somehow they weathered the storm and whilst the score remained 0-1 Cranfield were always in with a chance. Their hopes of saving the game were dashed in the 80th min when a hotly disputed refereeing decision gifted New Bradwell a second goal through Erswell who was one of two players involved that both the crowd and the players believed were clearly yards offside. Such was the intensity of the protests that it took almost five minutes before the game was restarted.

It took this incident to bring the home side to life and for the first time in the game they took the initiative. In the 86th minute Pilgrim for once eluded his marker raced into the penalty and his left footed shot to put Cranfield back in the game. Unfortunately their revival came too late. If only they had shown the same determination early on the result might have been very different.

Team :- S.Templeman, D.Goddard, S.Drew D.Billington (3rd.min), C.Evans, L.Ingerson, A.Watt, M.Griffiths, J.Dudoic, C.Cameron, N.Scott, D.Pilgrim

Reports by Larry Corkery



JUST LEARNING

## The Total Child Care Experience

Early care & education for children aged from 6 weeks to 5 years. Qualified, experienced & caring staff. Fun, exciting & imaginative environment. Safe dropping off area. OFSTED inspected

On the outskirts of Bedford A6 Elstow Progress Park with easy access to Milton Keynes, Luton, Cambridge & Bedford. Open 7.30am to 6pm Mon to Fri with full time, part time & half day sessions. With over 60 Nurseries *Just Learning* is one of the UK's leading childcare providers.

Tel 01234 330220/Fax 01234 330990  
bedford@justlearning.co.uk  
3 Progress Park, Bedford MK42 9XE



## CRANFIELD PET SUPPLIES

Pauline & Loraine would like to wish all of their customers A Happy New Year

## The Social Club

Wharley End

Friday, 11th Feb

8.45 pm

Dynamite

(The Party Duo)

In the Function Room

Friday 18th Feb

8.45 pm

Stax

(Soul/Funk/Disco and Reggae)

Friday 25th Feb

8.30 pm

Matrix

(70's Disco)

Tel: 01234 751586

## "SMILES MORE FUN"

With

ALLIED LINES  
LINE DANCE CLUB

EVERYBODY WELCOME  
ALL AGES AND ABILITIES

Beginners/Improvers Class  
Starting Monday 7th February  
Cranfield Village Hall  
9.30am to 11.30am

£4 per class  
Bring your own drinks  
Just turn up or for more information contact  
Mandy on 752044

## Cranfield Tae Kwon do Club

I would firstly like to wish all our members and readers a very happy new year and hope that all their aspirations and goals are achieved in the coming year. We have six students training hard for their Black Belts this year and many more grading for other belts. The next competition is on February 6th at Hereford and there is also one at Kettering on Feb 19th so we hope to be sending some competitors to those events and will be looking for some silverware. Training has now resumed to normal times at Cranfield, North Crawley, Olney and Woburn and we are looking for new members at all of these. We hope to be restarting the club at Towcester soon, so we will be doing a few demo's this year. Welcome to the new members who have started with us recently and I am sure they are already reaping the benefits.

Tae Kwon-do has a lot to offer to all age groups and apart from becoming fitter, more flexible and confident students learn a martial art which will afford them a level of self defence that, unfortunately, is so important in

this present day and age. Most of our self defence is based upon the ability to be able to react quickly and positively with blocks and strikes using techniques with the hands and feet and not complicated arm locks and throws. All our training is fully supervised and controlled and we have several qualified instructors who are all police checked. Our association is the largest martial art in the country with 20,000 plus members. If anyone would like to know more about Tae Kwon-do or our club or would like more info please give me call anytime and I will be pleased to answer any questions. If you are looking to lose weight get fit or just join a club and at the same time learn some self defence then come along or call me. It is suitable for anyone irrespective of age, sex or physical condition and will greatly change your life for the better. Make it your new year resolution and one you can keep.

David Rawle 01234 750716 mobile 07860 831729 e-mail david.rawle@bt.com

## Memorium

### Cyril White

7th January 2002

Three years have passed since that sad day

Constantly in our hearts you will always stay.

Each day we look at your picture Your face so loving and true.

We close our eyes and realize Just how very much we miss you.

We think of you in silence and often speak your name. But all we have left are memories and a picture in a frame.

Your loving wife Vi, daughters Tricia, Teresa & families



## Announcements

**John and Beverly Pearce.** Welcome to Cranfield. Wishing you a bright and happy future. Love from Gill, Alex, Michelle, Karen, John, Jemma, Abbie and Lewis.

**Gillian Conlan.** An Extra Big Thank You to my two daughters, Karen and Michelle, for giving me a fantastic surprise 60th. Birthday weekend. Love Mum. XXX

## For Sale

Buyer collects. Second-hand Magnet & Southern Pine Kitchen Units in good condition... 3 x 600mm wide Wall Units, 2 x 500mm Floor Units, 1 x 500mm wide Wall Unit, 2 x 600mm Floor Units, 1 x 600mm square Cooker hood cover, 1 x 1000mm

## Corner Unit

1 x 500mm 4-Drawer unit, 1 x 1000mm Sink Unit and various work surface lengths ... £250.00 (ono) or will sell separately. Phone 751336 after 12 noon.

## Language/Teaching

### Success Tuition

Maths, English and Science help locally available. All Levels. Also most Musical Instruments (including Singing). Phone 01908 677740 anytime. (Tutors Welcome)

### Spanish Lessons

Experienced Teacher, educated to degree level, offering private lessons to GCSE standard.

£15per hour

Contact Maria on 07971 935878

## Businesses

**East End Furniture. Restoration** Polishing, Cabinetmaking 01234 750071 iansrestoration@talk21.com Ian Holloway, East End, Cranfield

**IRONING SERVICE** Collection and Delivery Free Locally 40p per item mixed wash Please ring 01234 766569 and leave message

## Finance

### Jonathan Vowles

**Chartered Accountant and Tax Adviser**

Looking for a local accountant? Then ring for a free, no obligation meeting

+Audit + Accounts + Business Tax + VAT + Specialist advice for business + Income Tax + PAYE + NIC + Payroll + Registered Auditor

114 High Street, Cranfield, Beds

01234 752566

jonathan@vowles.co.uk

## Man and Van Hire

### Man With Van Light Removals

Tel: 01234 750197  
or 07869 144327



Garden Maintenance

## Kitchens

### F & D KITCHENS

25 Hollies Walk, Wootton

NEW KITCHEN?

Let us plan, Supply and Fit or, Fit only

Plumbing, Tiling, Carpentry Worktops cut and fitting service Sinks, Hobs, Ovens supplied and fitted

FREE ESTIMATES and Concessions for the elderly.

Call Frank - Tel: 01234 767717

Mob: 0798 680 8506

## Stone

### Helmstar Stone

Kitchen worktops in granite, marble and limestone - custom made. Can be fitted on new or old cupboards. Beautiful REAL stone fireplaces and hearths.

House signs in a selection of stones including slate and granite.

01234 751912 or 07976 519475

Helmstarstone@btinternet.com

## Aerial Photography

### SkyWalker Foto



Aerobatic Experience £99

Local Aerial Photographs

Old photographs copied & restored 35mm slides copied onto CD

Visit www.skywalkerassociates.co.uk

Tel: 07850 777168 Tel: 01234 752292

## Garden Services

### A & J SERVICES

Decorating  
Driveways  
Fencing  
Patios

Tel/Fax: 01234 750465

Alan Payne



New Used Spares Repairs Accessories

Associated Power Tools

01327 353 322

## DOWN-TO-EARTH

### LANDSCAPING

(Milton Keynes)

01908 270785

Professional customer focused garden services: hard landscaping, driveways and fencing.

## SkyWalker Associates



Digital Aerial Photography

Individual properties & villages

07850 777168 mornings

01234 752292 aft/evenings

## Domestic

### Prestige Ironing

Friendly • Reliable Professional

48 Hours Service Collection and Delivery available

Tel: 01 234 752075



Country Curtains

Customised curtains tailored to your choice

Personal and friendly service. Fabric books available for you to browse at in the comfort of your own home

FREE ESTIMATES AND HANGING

TEL: KAREN 01462 711423

TEL: CLAIRE 01234 751615

## Painting & Decorating

### Painter and Decorator

Internal and external work undertaken 18 years experience Free estimates given

George Thurston

01234 750851

07989 349005

### DM Wain Painter and Decorator

Tel 01234 765731

07748800180

## Electrical

### Burns. Domestic

Guaranteed repairs to most of

- Washing machines □
- Tumble dryers □
- and Dishwashers □

NO CALL OUT CHARGE

For a prompt, personal service, call

01234 840049

Mobile: 07778 891490

### Chris Shayler

ELECTRICAL CONTRACTOR

All aspects of electrical work undertaken and carried out to current regulations standards

- \* Installations Breakdowns
- \* No Job too small
- \* No call out charge
- \* Free estimates

Tel: 01234 750335

Mobile: 07836 266708

### D & G AYRE

ELECTRICAL DOMESTIC & INDUSTRIAL ELECTRICAL WORK CARRIED OUT TO REGULATION STANDARDS

From Single points to complete rewires. Testing & Certification when required Free Estimates:

On Call Friendly reliable local service J.I.B. Approved

Tel: 07971 438699 Darren or 07970

050271 Graham

## Car & Driver Hire

### Page-a-Car

Local Taxi Service

Airports & Stations

Phil Page

Tel: 01234 750981

or 07890220582

## Lost and Found

### Gold Ring

Mid November - Oval shaped gold ring with a small blue-ish opal in the centre with four tiny sapphires at surrounding points. It was a gift for my 18th birthday - many years ago - and there is a reward for its return.

Please contact Debbie on 01234 750477 or 07833956833

### Mountain bike

A mountain bike has been found off Bedford Road on 8th January - 'Nowhere near a mountain' says the finder. If you think it's yours, please contact Cranfield Express on 07739872956 and you could be reunited.

## Building & Maintenance

### James Stride Carpentry/General Building

Extensions, loft conversions, plastic fascias & soffits



For a free estimate  
telephone 01234 751730  
07866583485

### Ian Cowley

Carpentry & Building  
Contractor  
Conservatories, Windows,  
Fencing, Patios,  
Renovation & Maintenance  
Work

No Job Too Small  
Tel 01234 750430  
07791281262

## Cakes & Honey

### Cakes!

Decorated and novelty cakes for birthdays, Christenings and all special occasions or just because you like cake!

Contact:  
Sallie 01234 752223

### Pure Cranfield Honey.

£2.50lb. Also selection of handmade beeswax candles and polish.

Contact: Ian  
Beaty  
01234 750635  
or email



ian.beaty@tesco.net

## Golf Review 2004

Two Thousand and Four was a great year for golf  
Ryder Cup hopefuls all we were not  
But we played through the year at many a course  
Searching for golf balls in lakes, trees and gorse

We played each week our fine band of men  
The team grew stronger, by the end there was ten  
A regular crew of golfing greats  
Who ended the year good golfing mates

The courses were varied with plenty to see  
Wild life in abundance just by that damned tree  
Yes that one there in front of my ball  
At times we all wondered if it was worth it at all

Our first expedition took us up north  
Where the band of golfers played a new course  
In the Lincolnshire Wolds just outside Bourne  
Toft was its' name and it left us forlorn

Strange wildlife was spotted on our way around courses  
Not just the usual of sheep, cows and horses  
But Greater Peeing Ivors with that

distinctive whine  
"I can't play off 20 you've cut me too fine"

Par 3s' were plenty and plenty were missed  
With some best attempts from those still half pissed

Crossy and Palmer to name just two  
Who wandered round courses admiring the view

To play each Sunday with the weather so kind  
Sunshine and brightness with the rain always timed  
To start as we left the 18th green  
And headed back to Cranfield for drinks, so it seemed

And so off we went to a sunnier climate  
The south coast of Spain heard our golfers lament

"We stayed up too early drinking and talking"  
About the next wonderful courses we would be walking

Marbella, La Calla and Santa Maria  
All gave us tests and filled some with fear

But not for the victor who avoided the tizzy  
Of hangovers and tiredness, yes that was Lizzy

But back to reality and Sunday

morning starts  
Playing Beadlow, Wyboston and others like tarts  
Standing in ditches playing dodgy shots  
That's called REAL GOLF not holiday hots

The season climaxed with a day at the Guise  
Wonderful new club house with views to the skies  
The course was a test we all had to say

And to cap it all it was Drewys day  
A big thanks to Mick B for booking us in

To each course we played were grateful to him  
The only one disappointed was weatherman Jim  
Get wet? in the rain? the chances are slim !!!!

So we look forward to a new year to come

With high hopes and dreams of better golf for some  
We'll practice the driving, the irons and putting too  
But lets face it guys we'll cut you by two

So what if it doesn't turn out like it's planned  
Who cares? It's good fun and the beer's just grand.

Happy New (Golfing) Year

### Cranfield Express

Your adverts  
are seen in over 2,000 homes locally and across the world at [www.cranfieldexpress.co.uk](http://www.cranfieldexpress.co.uk)

## Monumental Masons



### Helmstar Stone

Beautifully crafted memorials  
High quality British and imported stones

Third generation monumental masons  
Choose from a huge range, or use our specialist design service.  
Brochures available on request

01234 751912 or 07976 519475  
[Helmstarstone@btinternet.com](mailto:Helmstarstone@btinternet.com)

## Cobblers!

### Favourite Shoes Need Repairing?

\* Save Time \*  
\* Save Parking Costs \*  
24 hour Turn Around  
(in most cases)

All Work carried out  
by a Qualified Tradesman!  
  
The Paper Shop  
High Street  
Cranfield  
Bed 01234 750236

### From Glenn at The Paper Shop

We would just like to let our customers know that, along with the staff at the shop, they raised £373.00 for the Flood Appeal. Cheque sent off 10.1.05.

## At the Cross Keys

### Want to Quit Smoking?

Starting 22nd February 6pm (six weeks) NHS are running a quit smoking course in the Cross Keys... It is teated as an NHS appointment  
Telephone Jim Tucker on 01525 636993 for details.

### Basic Food Hygiene Certificate

Friday 28th January Starts 6pm one evening only To be run in the Cross Keys Lounge /Restaurant bar (non-smoking) Ring 750213 to book a place.

## CLOGS Conserves Habitat For Rare Butterflies in Marston Thrift

Marston Thrift is an important nature reserve, in which many rare and uncommon species of plants and animals survive, despite the pressures of modern life. One such species is the Black Hairstreak butterfly, which requires specific food plants and sheltered open fly-paths. One of CLOGS' objectives is to develop sectors within the Thrift that provide these conditions, so that the butterflies can thrive by colonising new areas of the wood. Currently, we are extending a clearing on the Marston side of the Thrift, with the long-term aim of connecting it to the internal path running from the car park, where there is an established colony of Hairstreaks. Of course, the coppicing will also benefit other woodland species. Anyone who visits the Thrift will see the benefits resulting from CLOGS' efforts in previous years. In mid-January, the signs of spring are already appearing, with leaves of primrose growing through the leaf litter, and the promise of carpets of bluebells later in the year. We are grateful to all of our volunteers for their support, and would like to make especial mention of the Air Cadets from 207 (Cranfield) Squadron, who have regularly turned up in force, and set to work with enthusiasm. If you would like to join us, there will be three more Sunday working parties this season, on February 6th, March 6th and April 3rd. We meet at 10 am to light the fire, and work until about 3 pm. Most people bring some sustenance, such as a flask of coffee and some sausages to cook on the fire. Old clothes and stout footwear are essential. Tools and equipment are provided, and you are welcome to borrow our frying pan. Also, at 9.00 am on Sunday 17th April, we shall be carrying out our annual deer count. For further details, please call Angela and Clive Bucknall on 750421.

## Cranfield United Football Club Continued - 1985 - 2004

With our Centenary story the late 80's early 90's, the visit to Kettering Town and Stevenage Boro' was the highlight to many Town visits. In various Cup Competitions, reaching the Stantonbury and Hitchingbrooke Cup Final also reaching the Cove Window Trophy, the Club continued in senior football finishing mid-table until 1995.

1995 will be a year Cranfield will remember. After a small hardworking committee found it hard to raise enough support both on and off the park, it seemed that Crawley Road gates would have to shut due to no committee, also debts to various suppliers and individuals. Football would have continued as the Ground Trust states football can be played by any team that could run a club. In May 1995, a group formed a Committee with Brian Dosser as Chairman, two people - Carol Jones and Alan Leach ran the Clubhouse Bar every day for four years. Those within the Club know what that did for the Club. Slowly the debts to suppliers were paid then individuals loans returned. Hard work by these persons then began to raise funds for a large extension to the Social Area which once again Friends of the Club built themselves. The Club with a very good pitch and excellent facilities staged many Inter County matches and also Local Cup Finals.

1995 - On the football side to cut cost, United returned to Beds. League then under Mick Brightman they once more returned to Senior Football after four seasons. Jeremy Wall and Ross Seamark took charge from Brightman and this season the Club plays in Division 1 S.M. - the highest the Club has played in since the 1980's. During this period United's Melvin Garner and Jim Brandon were awarded Linesman Award South Midlands. The Club won the SML Sportsmanship Award. 1985/86 and again 1993/94. Brian Griffiths was awarded the Club Secretary's Award 1991/92. Then in 2003 the Club became only the 4th Club to become a standard Charter Club. This was due to Larry Corkrey's hard work.

We have now reached the end of the Club's first 100 years of Cranfield United.

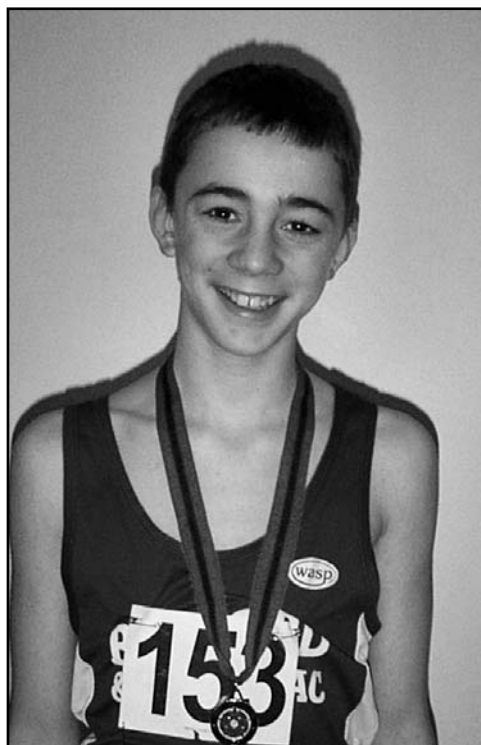
### Thank you

The Football Club would like to thank all local companies, farmers and hundreds of village people who through good and bad times have helped the Club. Also thanks to 'Cranfield Express' for printing our story. Please remember we will produce a book, should any villager like to write a small story, incident, meetings etc. about any players. Please do write to Cranfield United Football Club, Crawley Road.

MJ

## Jumping for success

James Peters of Cranfield got his New Year off to a flying start by taking Silver medal in the U15 boys High Jump at the South of England Indoor Athletics Competition recently. James and the winner both jumped 1.60m, and James was narrowly defeated on countback (the number of failed jumps at the previous height). His personal best is 1.65m which he hopes to improve significantly this year.



James is no stranger to High Jump success and broke all the school records whilst at Holywell, also winning the Schools District and Mid-Beds Schools tournaments for the school. He is looking forward to the start of the athletics season at Wootton Upper School which he now attends.

He trains at Bedford and County Athletic Club and has represented them across the Eastern and Southern regions. His next competition is a National event in Birmingham.

James' twin sister Lauren is also a High Jumper with a list of successes to her name too.

**murco**



Wharley End  
Garage

groceries

frozen food

milk & bread

sandwiches

dry cleaning

servicing &  
repairs

tyre fitting

# KINNS GARAGES LTD WHARLEY END

REPAIRS AND SERVICING FOR MOST MAKES  
USED CAR SALES

HP Facilities Available

**M.O.T**  
WHILE YOU WAIT  
BY APPOINTMENT

**UNIPART**



**DIESELS TESTED**

**CATALYSTS TESTED**

**NEW STYLE JET WASH & VACUUM**  
**YOUR LOCAL DRY CLEANING AGENT**

7.5m Tape Measure £2.99

Hardware Caddy £2.99

**WHARLEY END CRANFIELD BEDS.**  
**(01234)750233**

## Mother and Daughter gain Tae Kwon Do 2nd Dan



**Mary and Anna Hartley**

Mary and Anna Hartley took their Second Degree Black Belt Gradings in November. They were graded by Mr B. Sahota Sixth Degree Black Belt over a gruelling two days in Dunstable. Mary said 'When I started Tae Kwon Do in 1997 I never thought I would get to Black Belt let alone get this far. It shows what perseverance and hard work can achieve.'

## Cranfield Colts Girls Under 10's



Report on the Aylesbury Development Tournament - November 27th 2004  
Match 1 - Mortonville Athletic 0 Cranfield Colts 0

A good even game with both teams unlucky not to score. Both defences played well with Cloe playing well after volunteering to go in goal as Rose was ill. The midfield made some good defensive tackles and long runs at the opposition.

Match 2 - Cranfield Colts 0 Chesham 3

A tough game against a strong team from Chesham. All the girls kept trying hard but with most of the play at the Cranfield end it was hard work defending. It was a good result considering the opposition were bigger and stronger than the Colts but the girls enjoyed the game.

Match 3 - Cranfield Colts 2 Leighton Whites 0

A great game with everyone determined to get a good result. Strong tackles in defence won us the ball and we used it well to attack. Some great runs from Claire who hit the post twice, the bar, just shot wide several times and forced the goalkeeper to make a number of saves. She did everything but score. Lucy came on as a substitute and scored within a minute after pouncing on a shot from Claire that rebounded. Hannah then did one of her long runs down the right, cut inside and shot under the goalkeeper to score the second.

We finished third in the group and went on to play a strong Mortonville United who finished third in their group. It was a hard game with our opponents putting us under constant pressure and they eventually won 4 - 0.

It was a good morning of entertaining football enjoyed by the parents and girls.

Match Report : Mick

## Halse Halted in thier Tracks

**Cranfield Colts U14's 5 Halse Utd 2**

The U14's continue this year the same way they finished 2004 with another convincing win this time against Halse Utd.

The game started off with one-way traffic, and after 10 minutes with a clever chip over the two centre backs by Jamie, Harry carried on his run to slot the ball passed their keeper. Harry went on to score his second goal with a defender having the last touch but the referee credited the goal to Harry as the ball was probably over the line anyway. Ryan scored with a solo run from our 18 yard box managing to bundle the ball over the line (PASS IT). Mat scored just before half time with a neat shot into the corner.

We knew that Halse would come at us at the start of the second half just by the team talk that their manager was giving them. They tried to put us under pressure but we had all the areas at the back covered, only for them to change tactics and put a long ball over the top of our defence for their forward to run onto. John came off his line for the 50-50 ball, only to get injured in the process and by the time he had got back on his feet, Halse had managed to lob our defence making it 4-1. Harry again popped up to score his hat-trick, but near the end Halse had a corner and with a clear header and no-one challenged him, which was a little disappointing as we do not usually concede goals from corners or set pieces.

Newport Pagnell and Brickhill Wanderers are well clear in the league but not unstoppable, we are now 4th and only 5 points behind with 10 games to go, and we still have to play both of them, so who knows?

I mentioned the scorers, but all the boys deserve a mention for their performance this season: The team on 16th January 2005; John Davies, William Timmins, James Rawlins, Stefan Murawski, James Lake, Jordon Gowlett, Matthew Taylor, Ryan Bate, Tom Tressider, Peter Kerr, Ryan Harris, Jamie Cooper and we mustn't forget Harry Shiner.

Man of the Match: Stefan Murawski ...

Scorers: Harry Shiner 3, Matt Taylor 1, Ryan Bate 1

Report by: Lionel Cooper

## Property Maintenance Specialists



**Guaranteed quality work, practical advice and professional, friendly service**

**Bathrooms and Kitchens  
Plumbing and Electrical  
Painting and Decorating  
UPVC Installation  
Patios and Fencing  
Brickwork and Renovation**

**Malcolm Sargent  
4 Lodge Road  
Cranfield  
Beds  
MK43 0BG  
Tel: 01234 751460  
Mob: 07812 185895**

**And much, much more...**

Tel: (01234) 750613

**R. Phillips**

**Carpentry and General  
Building Maintenance**  
Windy Ridge, Lodge Road,  
Cranfield, Beds MK43 0BG

Cranfield Express is a limited company

**Cranfield Express**

**SPORT**



**WARD'S WELDING &  
FABRICATIONS LTD**

Fabricators in Mild Steel,  
Aluminium & Stainless Steel,  
Galvanised or Painted  
TEL 01908 586505 / FAX 01908 587505  
EMAIL  
steve@wardsweldingandfabrications.co.uk

## Cranfield Colts Girls U12's Results

**Shefford Saints U12 Girls 6 v 4 Cranfield Colts U12 Girls (League Fixture)**  
This proved to be the first of two thrilling ties against Shefford in as many weeks. We started off controlling the game well, with Alice making several great breaks down the left wing, which eventually resulted her first Colts goal. However a quick response from Shefford levelled the scores and with a couple of quick goals we went in 3-1 down at half time. Immediately after the break we pulled one back courtesy of a scrambled corner netted by Sophie. With real end-to-end play another two goals followed for Shefford and then Natalie scored for Cranfield quickly followed by Sophie's second. The last five minutes were tense and the game could have gone either way however with Cranfield pushing forward Shefford took the opportunity to slip past the defence and scored to make the final score 6-4 to Shefford.  
Player of the week - Sophie Evans

### Sandy Colts U 12 Girls 7 v 0 Cranfield Colts U12 Girls

A very muddy Sunday afternoon in Sandy saw the girls up against mid-table Sandy Colts. For the first 20 minutes Cranfield took the game to Sandy and pressurised their goal but with no reward. The defence remained solid passing the ball up through the midfield who created some good chances down both wings. The pace eventually took its toll and the Sandy Colts broke down our left flank to score. By half time we were 4-0 down. The second half was a muddy affair and despite very impressive defensive performances from Tara and Emily and some great saves from a very muddy Jess we could not hold off the Sandy attack and the final score was 7-0 to Sandy  
Player of the week - Jess Howard

### Cranfield Colts U12 Girls 2 v 4 Shefford Saints U12 Girls (Cup Match)

The previous match against Sandy had been a very close game and this proved to be no different. The added excitement of a cup fixture had everyone buzzing. Cranfield opted for a more attacking formation to try to keep the Shefford team under pressure. Again the match was action packed with chances at both ends throughout however Shefford nicked an early goal in the first half which settled them. Continual pressure from Cranfield paid off and from a corner Shefford conceded an own goal. Shefford came back stronger and before half time scored two more goals making the half time score 3-1 to Shefford. A change of players at half time had Georgina up front and the pressure played off with a midfield ball passed through to the penalty area, which Georgina slotted away for her first goal for the Colts. Cranfield applied more pressure from midfield with Lizzie, Natalie and Beth making surging runs forward but not quite getting the ball in the back of the net. Just before full time Shefford broke away and managed to score a fourth goal making the final score 4-2 to Shefford. Player of the Week - Lizzie Shiner

### Cranfield Colts U12 Girls 1 v 7 Kempston U12 Girls

A tough game this one - it started off a fairly evenly. However our new attacking strategy was not proving to be successful, as Beth and Natalie in Midfield were not able to work the ball through to the Lizzie and Sophie. Soon the strength of the Kempston team started to show through and they scored. The Cranfield team responded well with a period of good attacking play, which resulted in a number of corners and from one of these Lizzie netted an excellent goal. A further goal for Kempston had Cranfield 2-1 down at half time. The second half was a niggly affair which the Kempston girls dominated and despite valiant defensive efforts from Tara, Natalie and Emily they eventually netted a further 5 goals to win the match 7-1.  
Player of the week - Tara Smith

### Cranfield Colts U12 Girls 0 v 12 Flitwick Eagles U12 Girls

Always a difficult match on paper and one which was fought very much in the midfield throughout. Cranfield found it difficult to retain midfield control of the ball and keeping up with the pace of Flitwick was difficult who made good use of wings and crossed the ball into the centre with great skill. By half time we were 4-0 down. However we continued to try and get a break and in the second half Lizzie and Amy had a number of good runs towards the Flitwick goal. Unfortunately we could not put the ball in the back of the net and Flitwick continued to dominate scoring a further 8 goals in the second half. Player of the week - Amy Mirwald

We currently have girls ranging from 7 to 13 years of age training on a Friday night and have a full programme of U12's team fixtures and regular tournaments and friendlies for the U10's team. If you are in school years 3 to 8 and are interested in playing for us this season then contact either Trevor Dove (01234) 750363 or Kevin Howard (01234) 750890 for more details.

Report by - Trevor Dove

## Message from Cyberspace

I was recently sent via a friend a copy of Cranfield Express No 46 January 2004. On page 13 were 2 photos of Cranfield United Football Club from the 1935/36 season. I have an interest in both pictures. In the top picture of the Beds Minor Cup Winners my father is on the front row left Norman 'titch' Lowry (not Lawrie) who was involved in the construction of the Cranfield Aerodrome working for a company called John Laing. Whilst in Cranfield he met and married my mother who was then Wyn Howe. The lower picture of the youth team has on it two of my uncles Ro Howe and John Howe. My grandfather was the Mont Howe mentioned in the article who owned the ground whilst my gran Amy Howe made the shirts that were worn. Both my Uncle John and mother are still alive. John lives in Leicester and my mother Wyn Lowry in Matlock. Could you please email me copies of the photos (if possible a little larger) so I can print off copies for them both. This would bring back fond memories for them.

Peter Lowry

Done that - Ed



**WILKINSON & COMPANY**

Accountants, Business Advisers and Tax Consultants

Today every business needs to control costs and we have developed a unique and positive approach to our charge structure to help our Clients to do this.

At Wilkinson & Company, we have developed a menu of fixed price services and these fixed prices cover:

- Auditing
- Accounts Preparation
- Company Tax
- Personal Tax
- Self Assessment
- Monthly, Quarterly or Yearly Management Accounts
- Manual or Computerised Book-keeping
- Company Secretarial Work
- VAT Work
- Investment Advice
- Wage Preparation
- General Computer Advice

Plus, if you wish, we can arrange for you to pay by monthly Standing Order to help ease your cash flow.

To arrange a free meeting to discuss how we can help you, please ring

**01234 841842**

and ask for

Peter Wilkinson, Elia di Lorenzo, Roger Hammond and Pippa Wilkinson

136 - 140 Bedford Road, Kempston, Beds MK42 8BH

Tel: 01234 841842 Fax: 01234 841843

**MOT  
TESTING**

**CENTRAL AUTO REPAIRS**

ESTABLISHED FOR 20 YEARS

Central Garage, High Street, Cranfield, Beds. MK43 0JB

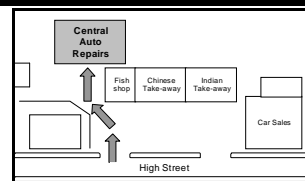
**YOUR LOCAL VEHICLE REPAIR SPECIALIST**

- Servicing
- Brake Overhaul
- Light Commercial Repairs
- Tyres and Exhausts

**24-hour Vehicle  
Recovery**

Tel: 01234 750909

Fax: 01234 752345



Mon-Fri 8.30 am - 5.00 pm  
Saturdays 8.30 am - 1.00 pm

**ACCIDENT REPAIRS FOR LEADING  
INSURANCE COMPANIES**